

Nº T11.2016-EC01

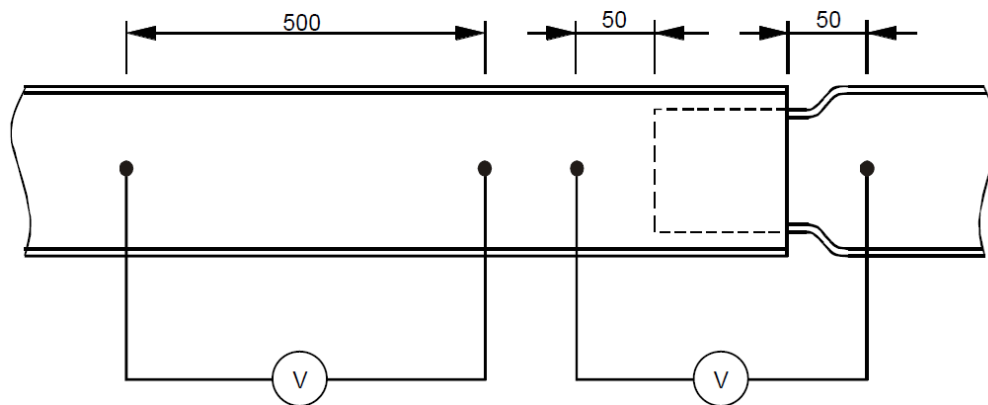
1. Product Description and References

EASYCONNECT steel wire mesh cable trays on electro plated Zn coating. Representative samples of EC100, EC60 and EC30 series: EC100.200EZ, EC60.100EZ and EC30.100EZ

2. Test Setup

In accordance to *IEC 61537*: "Cable management systems. Cable tray systems and cable ladder systems" Art. 11.1.1 & 11.1.2

Art. 11.1 – Electrical Continuity



Dimensions are in millimetres

Figure 9b – Cable tray system or ladder system with integral means of connection

Figure 9 – Test set-up for electrical continuity

3. Test Results

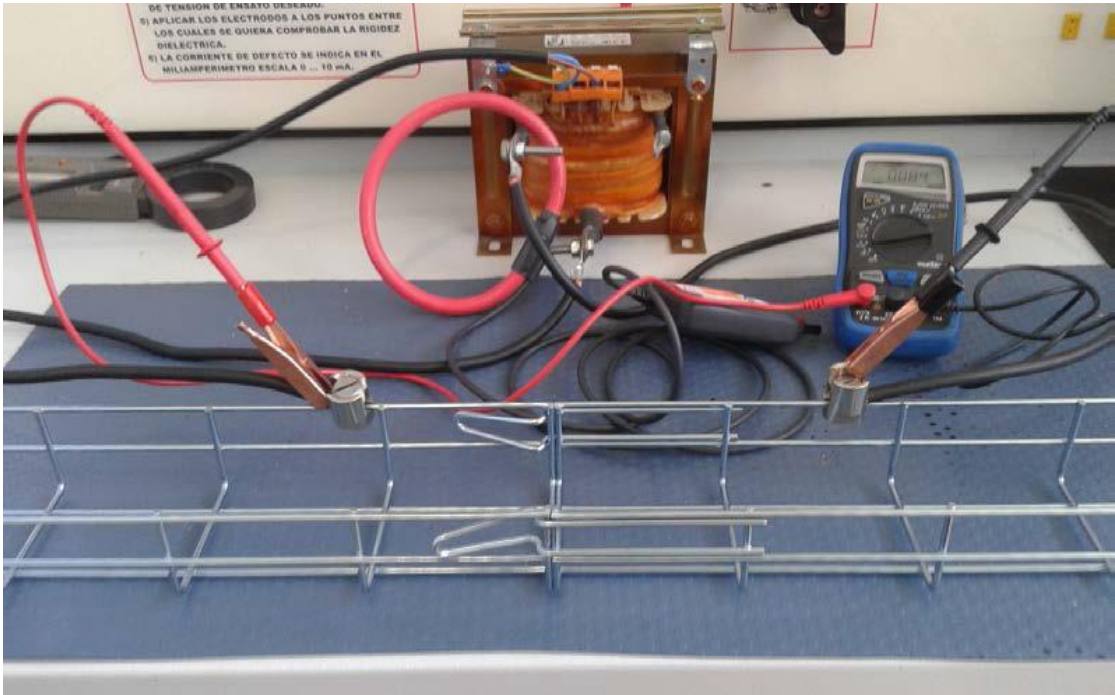
	EC100 series	EC60 series	EC30 series
Wire diameter \varnothing (mm)	EC100.200 (4,3)	EC60.100 (3,9)	EC30.100 (3,9)
I (A)	25	25	26
V (mV)	0,058	0,084	0,08
Z (mOhm)	2,32	3,36	3,08

Conclusion: Impedance $Z < 50$ m-ohm through joints. System electrically conductor classified in accordance to IEC 61537.

EC30 Series



EC60 Series



EC100 Series



4. Declaration of Conformity

We declare that EASYCONNECT wire mesh cable trays, are suitable and safe for the intended use and designed and manufactured and tested in conformity with

- UNE EN 61537. Cable management - Cable tray systems and cable ladder systems. Clause 11.1 and 11.2 Electrical Continuity.

Verified and Approved by:
Mrs. Carmen Valdés, Managing Director
VALDINOX S.L.



Santander, 23rd November 2016